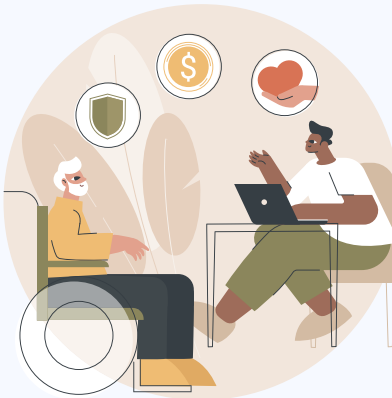


Social Prescribing Referral Journey



Healthcare Providers

Assesses needs and completes referral



Case Manager / Link Worker

Creates pathway to community



Community and In-Home Supports

Connects client with support or service that meets strengths, needs, or interests.

What is Social Prescribing?

Your healthcare provider has made a Social Prescription to link you with someone who can help you:

- Access services
- Listen to your needs
- Connect with others

How does this program benefit you?

The program connects you with the right resources to help you save time, for example:

- Navigation of Community Supports and Services
- Assistance with Applications for Financial Benefits
- Meal Assistance/ Food Security
- Housekeeping
- Grocery Shopping
- Assisted Transportation
- Socialization
- Housing
- Legal Assistance
- Elder Abuse
- Snow Shoveling/ Yard Maintenance
- Recreation/ Leisure

What is a Link Worker?

A Link Worker is a non-healthcare professional working in a community organization such as Sage Seniors Association, Jewish Family Services Edmonton, or the Multicultural Health Brokers. They will support you in developing and achieving your personalized set of goals by engaging with community resources.

Link Workers do not replace the role of your health provider, but rather, they will work with you to identify and achieve your goals.

Helping you access services you can afford:

Some services may have additional associated costs. When you meet with the Social Prescribing Link Worker or Case Manager, they will help to determine those costs and whether you may be eligible for subsidized costs.

For Further Information on Social Prescribing, please visit our website at <https://seniorscouncil.net/social-prescribing/>



I've been referred to the Edmonton Social Prescribing Seniors 55+ Project. What's next?

Step 1

Your healthcare professional has completed a referral to access community supports

*Healthcare providers needing information on how to make a referral can call 587-635-1575.

Step 2

A Link Worker will contact you directly by phone to set up a time to connect

Step 3

The Link Worker will partner with you to provide access to supports in the community

Project Funding:

The project is being supported by the Government of Alberta and by Healthy Aging Alberta to reduce the pressure on Alberta's healthcare system.



Project Partners:



All referrals for the program must be made by a healthcare provider. Contact your healthcare professional today.
#PrescriptionforChange

Edmonton Social Prescribing Seniors 55+

A Prescription for Change

